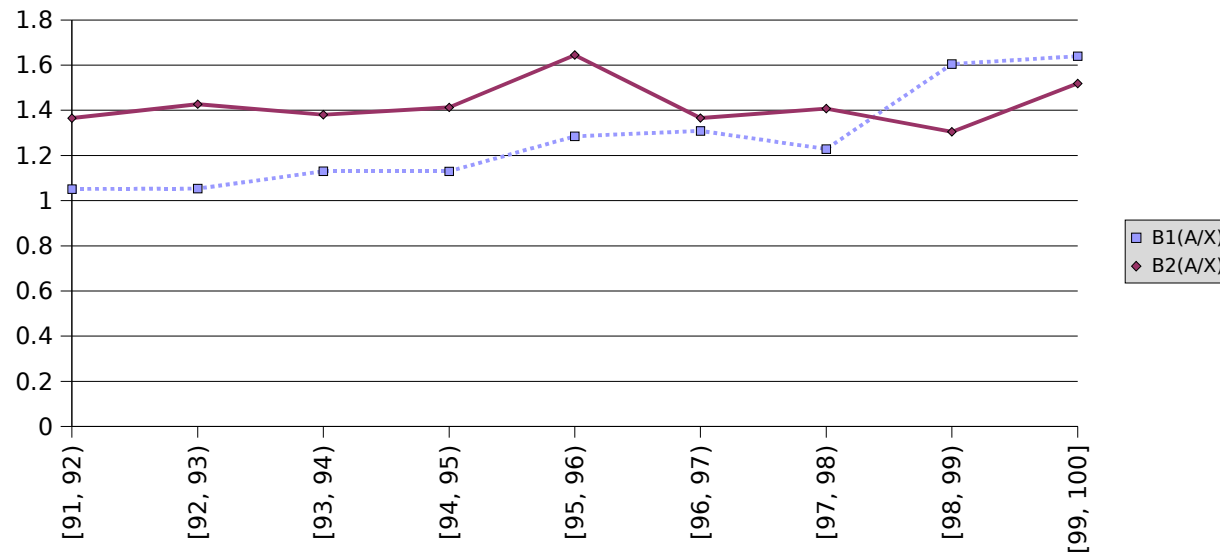


Supporting data for Fig. 1.

Similarity to cons., (%) *	Total length of repeats with given similarity to consensus				Average density of repeats				Ratios of densities	
	B1		B2		B1		B2		B1(A/X)	B2(A/X)
	A	X	A	X	A/CA	X/CX	A/CA	X/CX		
[91, 92)	2000987	119749	2107832	97139	0.000881	0.000838	0.000928	0.000680	1.05	1.37
[92, 93)	2171774	129767	2194875	96777	0.000956	0.000908	0.000966	0.000677	1.05	1.43
[93, 94)	3206740	178576	2043196	93121	0.001412	0.001250	0.000900	0.000652	1.13	1.38
[94, 95)	3052444	170073	1643657	73189	0.001344	0.001190	0.000724	0.000512	1.13	1.41
[95, 96)	2291835	112234	1129494	43213	0.001009	0.000785	0.000497	0.000302	1.28	1.64
[96, 97)	1496723	71957	964161	44422	0.000659	0.000503	0.000424	0.000311	1.31	1.37
[97, 98)	888020	45479	871469	38952	0.000391	0.000318	0.000384	0.000273	1.23	1.41
[98, 99)	270496	10607	454160	21904	0.000119	0.000074	0.000200	0.000153	1.6	1.3
[99, 100]	99825	3831	68978	2858	0.000044	0.000027	0.000030	0.000020	1.64	1.52
Total length of chromosomes										
	CA	CX	CA	CX						
	2271474270	142916804	2271474270	142916804						

Ratios of SINE densities



* - [,] - including boundary; (,) - excluding boundary.

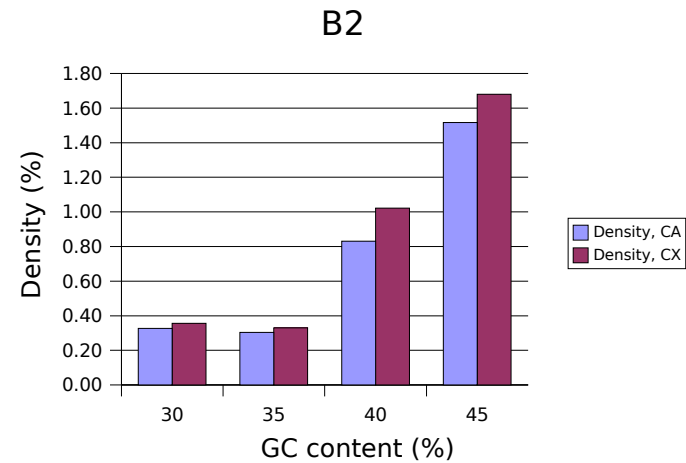
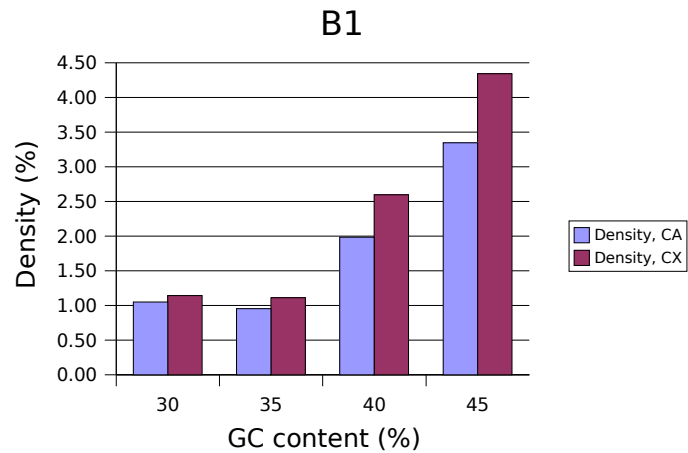
Supporting data for Fig. 2.

B1	Autosomes			Chromosome X			
	GC	50-kb fragments	B1 repeats	Density, CA	50-kb fragments	B1 repeats	Density, CX
30		3758657	39524	1.05	1707388	19543	1.14
35		755241866	7213852	0.96	86161049	958153	1.11
40		928445461	18434384	1.99	49324557	1281331	2.60
45		469995538	15736666	3.35	5454539	236967	4.34
SUM		2157441522	41424426	1.92	142647533	2495994	1.75

A/X
0.92
0.86
0.76
0.77

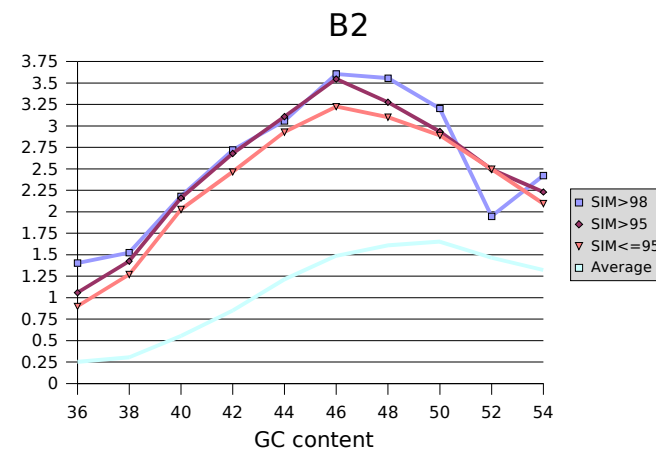
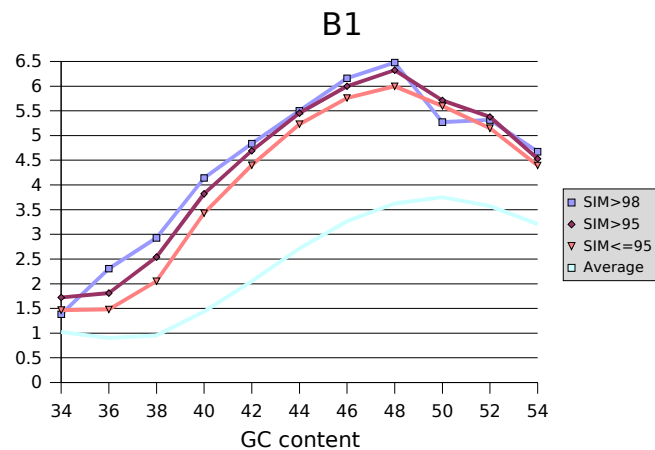
B2	Autosomes			Chromosome X			
	GC	50-kb fragments	B2 repeats	Density, CA	50-kb fragments	B2 repeats	Density, CX
30		3758657	12287	0.33	1707388	6082	0.36
35		755241866	2301051	0.30	86161049	284831	0.33
40		928445461	7721258	0.83	49324557	503682	1.02
45		469995538	7122220	1.52	5454539	91562	1.68
SUM		2157441522	17156816	0.80	142647533	886157	0.62

A/X
0.92
0.92
0.81
0.9



Supporting data for Fig. 3.

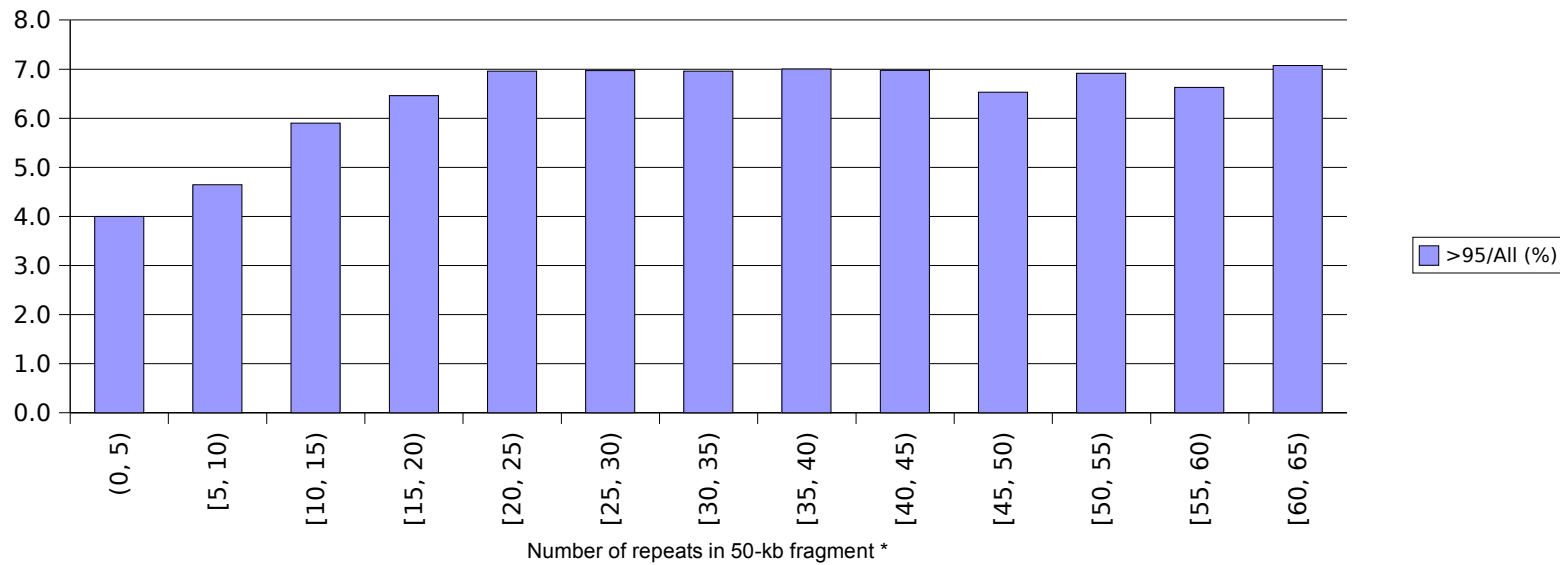
B1				Windows flanking B1s >98% sim.			Windows flanking B1s >95% sim.			Windows flanking B1s <=95% sim.			Average		
	B1 length	Region size	Density	B1 length	Region size	Density	B1 length	Region size	Density	B1 length	Region size	Density			
CG, %			SIM>98			SIM>95			SIM<=95						Average
34	2062	149142	1.38	39253	2280076	1.72	889912	60705641	1.47	170538	16699635	1.02			
36	14789	642021	2.3	376616	20797386	1.81	10966975	740386574	1.48	2125182	235418446	0.9			
38	80944	2764096	2.93	1647043	64857989	2.54	31792027	1548647287	2.05	4545928	476987210	0.95			
40	161374	3897430	4.14	4740819	124068266	3.82	76052047	2219144855	3.43	6596123	459569389	1.44			
42	275870	5705134	4.84	7940032	169185518	4.69	115533801	2625172062	4.4	7860796	383404015	2.05			
44	423454	7696469	5.5	10746186	196979915	5.46	154143608	2947040618	5.23	8853524	326250584	2.71			
46	369091	5990587	6.16	9757067	162653835	6	144332111	2505530802	5.76	7523535	230378847	3.27			
48	276306	4265018	6.48	7158810	113181544	6.33	103121714	1719592739	6	5139353	141772663	3.63			
50	152776	2898105	5.27	4272116	74781539	5.71	65347879	1167437512	5.6	3430971	91479362	3.75			
52	66029	1241993	5.32	1750979	32559718	5.38	25827621	501687886	5.15	1483640	41522337	3.57			
54	22982	491818	4.67	319078	7041169	4.53	5150183	117194676	4.39	339967	10599023	3.21			
B2				Windows flanking B2s >98% sim.			Windows flanking B2s >95% sim.			Windows flanking B2s <=95% sim.			Average		
	B2 length	Region size	Density	B2 length	Region size	Density	B2 length	Region size	Density	B2 length	Region size	Density			
CG, %			SIM>98			SIM>95			SIM<=95						Average
36	6213	443168	1.4	181121	17130098	1.06	1371662	152633073	0.9	593726	235418446	0.25			
38	20899	1370587	1.52	591961	41531572	1.43	4597731	362589771	1.27	1455417	476987210	0.31			
40	52872	2423562	2.18	1580536	73173450	2.16	12664719	625044553	2.03	2537660	459569389	0.55			
42	68088	2504029	2.72	2824554	105386431	2.68	19203600	779318781	2.46	3260211	383404015	0.85			
44	127981	4183962	3.06	3887644	125012324	3.11	27803669	949132433	2.93	3957304	326250584	1.21			
46	138154	3831893	3.61	3956080	111521742	3.55	26439495	819844454	3.22	3427134	230378847	1.49			
48	77273	2172574	3.56	2546828	77749399	3.28	16828299	542360666	3.1	2280858	141772663	1.61			
50	34562	1079212	3.2	1523693	51941576	2.93	10605351	367070358	2.89	1511285	91479362	1.65			
52	8505	436791	1.95	514396	20631253	2.49	3629185	145309705	2.5	608687	41522337	1.47			
54	3444	142250	2.42	112332	5035563	2.23	704568	33630930	2.1	140199	10599023	1.32			



Supporting data for Fig. 4.

# of repeats in 50-kb window *	Length of B1 repeats		>95/All (%)
	All	sim>95	
(0, 5)	2306569	92176	4.0
[5, 10)	12105818	562115	4.6
[10, 15)	7438919	438968	5.9
[15, 20)	5727942	370137	6.5
[20, 25)	5071697	352967	7.0
[25, 30)	4339072	302541	7.0
[30, 35)	3831288	266585	7.0
[35, 40)	2856592	200064	7.0
[40, 45)	1840737	128417	7.0
[45, 50)	1221551	79738	6.5
[50, 55)	693487	47979	6.9
[55, 60)	390393	25874	6.6
[60, 65)	189846	13428	7.1

B1

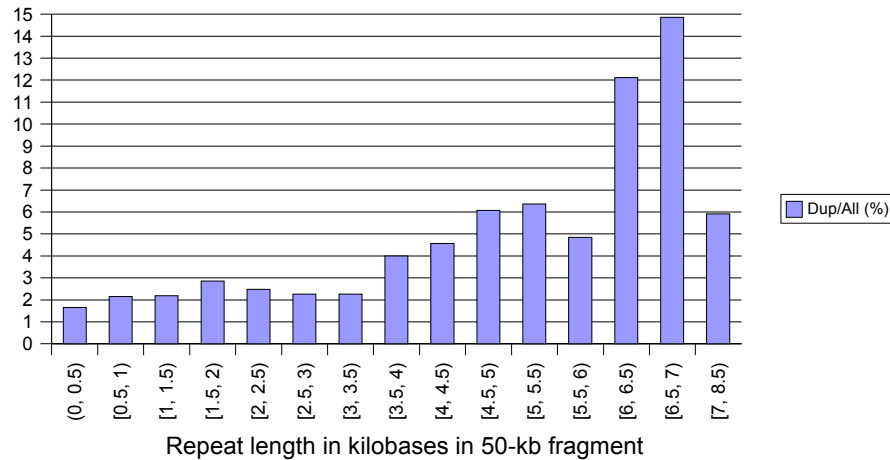


* - [,] - including boundary; (,) - excluding boundary.

Supporting data for Fig. 5 (B1).

B1			
Cluster Size, kb*	Total length of 50-kb windows		Dup/All (%)
	All with B1s	With dupl. B1s	
(0, 0.5)	968127548	16011685	1.65
[0.5, 1)	650586646	13985440	2.15
[1, 1.5)	234385889	5116721	2.18
[1.5, 2)	133958358	3833766	2.86
[2, 2.5)	92150267	2282492	2.48
[2.5, 3)	69279679	1566372	2.26
[3, 3.5)	51514669	1167200	2.27
[3.5, 4)	40859542	1634888	4
[4, 4.5)	29048176	1325254	4.56
[4.5, 5)	17712737	1074592	6.07
[5, 5.5)	12129032	771969	6.36
[5.5, 6)	7200269	349507	4.85
[6, 6.5)	4388048	531898	12.12
[6.5, 7)	1977152	293683	14.85
[7, 8.5)	1687298	99705	5.91

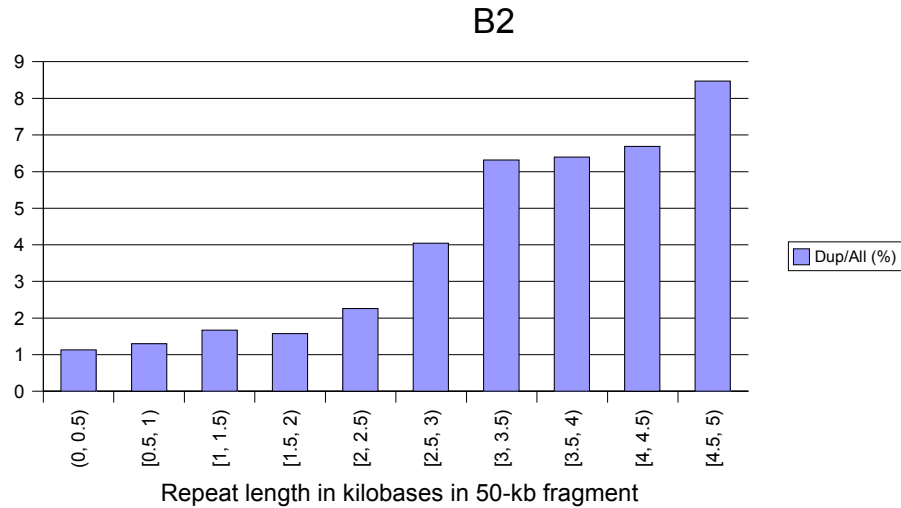
B1



* - [,] - including boundary; (,) - excluding boundary.

Supporting data for Fig. 5 (B2).

B2			
Cluster Size, kb*	Total length of 50-kb windows		Dup/All (%)
	All with B2s	With dupl. B2s	
(0, 0.5)	987158917	11179647	1.13
[0.5, 1)	331871303	4322023	1.3
[1, 1.5)	135126447	2258481	1.67
[1.5, 2)	74474068	1174268	1.58
[2, 2.5)	41081157	927185	2.26
[2.5, 3)	19964457	807511	4.04
[3, 3.5)	9363058	591658	6.32
[3.5, 4)	4630150	296237	6.4
[4, 4.5)	1438708	96208	6.69
[4.5, 5)	590186	50000	8.47



* - [,] - including boundary; (,) - excluding boundary.